

# JUNEMEDICAL

SIMPLIFYING COMPLEXITY



# GALAXY II®

**Second Generation  
Single Use Surgical Retractor**

**WARNING: PRESENTATION CONTAINS SURGICAL IMAGES**



# HOW GALAXY II® WAS BORN



## ➤ LIGHTBULB MOMENT

- CUMBERSOME AND AWKWARD
- EXPENSIVE

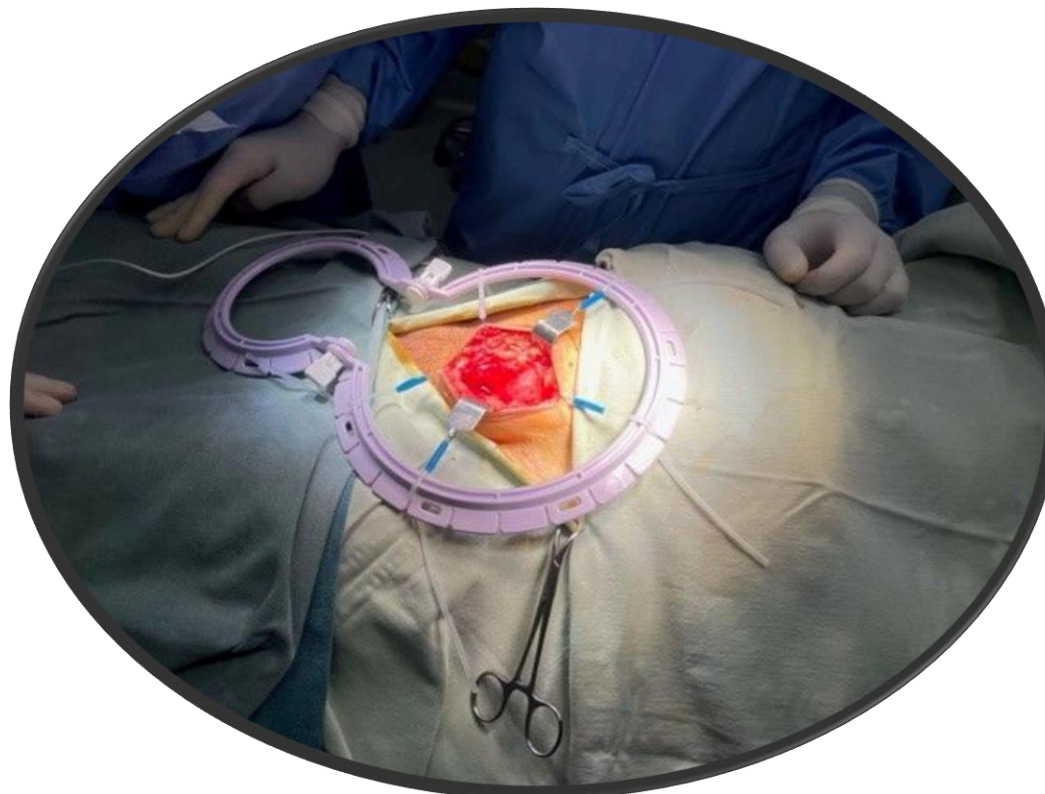
## ➤ DEVELOPMENT

- LIGHTER
- CHEAPER
- UNCLUTTERED

## ➤ QUEENS AWARD FOR INNOVATION 2021

# What Is Galaxy II?

- Self Retaining
- Lightweight
- Sterile
- Disposable
- Recyclable
- Single Use
- 8 Point Retraction
- Optimal Vision



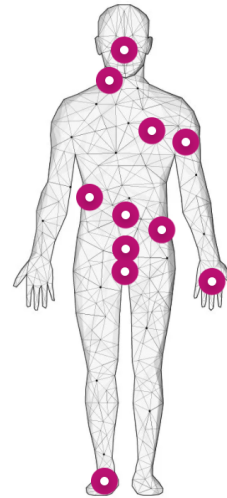
# Kits



- Snowman
- Square
- Slider
- 5mm Sharp
- 5mm Semi Blunt
- 5mm Blunt
- 12mm Blunt
- Catheter Clip
- Light Clips

# Marketing Literature

## Where a retractor may be of use



**Male**  
SPECIFICALLY DESIGNED FOR MALE PROCEDURES Order code: JUNE3001b5  
Content: 6x 12mm Blunt stays, 1x 5mm Sharp stay, 2 x 3-finger claw and 2x Double 7mm Sharp hooks, our unique penile hammock and Snowman shape retractor.

**Gyn**  
MOST POPULAR is Order code: JUNE3000s5  
Contents: 1 x snowman ring, 8 x 5mm SHARP stays

**Urology**  
WE RECOMMEND Order code: JUNE3000sb5  
Contents: 1 x snowman ring, 8 x 5mm SEMI BLUNT stays

**Colorectal**  
POPULAR CHOICE is Order code: JUNE3001b5  
Contents: 1 x square ring, 8 x 5mm BLUNT stays

**ENT**  
FOR MAXIMUM ADJUSTIBILITY Order code: JUNE3001s5  
Contents: 1 x slider, 8 x 5mm SEMI BLUNT stays

**Neck**  
FOR MAXIMUM ADJUSTIBILITY Order code: JUNE3001s5  
Contents: 1 x slider, 8 x 5mm SHARP stays

**Hand**  
FOR BEST POSITIONING Order code: JUNE3001sb5  
Contents: 1 x square ring, 8 x 5mm SEMI BLUNT stays

**Foot**  
TRY THIS Order code: JUNE3001s5  
Contents: 1 x square ring, 8 x 5mm SHARP stays

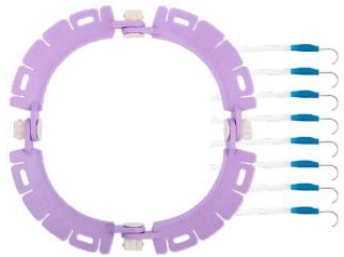
**Plastics**  
WE RECOMMEND Order code: JUNE3001s5  
Contents: 1 x slider, 8 x 5mm SHARP stays

**Cardio**  
TRY THIS Order code: JUNE3001s5  
Contents: 1 x slider, 8 x 5mm BLUNT stays

**Hernia**  
MOST ORDERED Order code: JUNE3000b12 (kit) and JUNE3005b (claws)  
Contents: 1 x snowman, 8 x 12mm BLUNT stays (Kit)  
Single packed additional claws

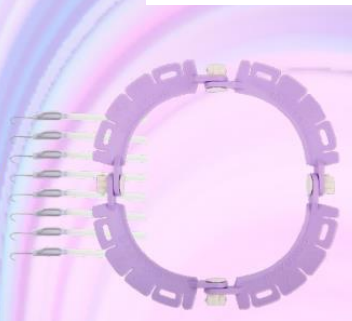
## Square Kits

Pre-packed and sterile

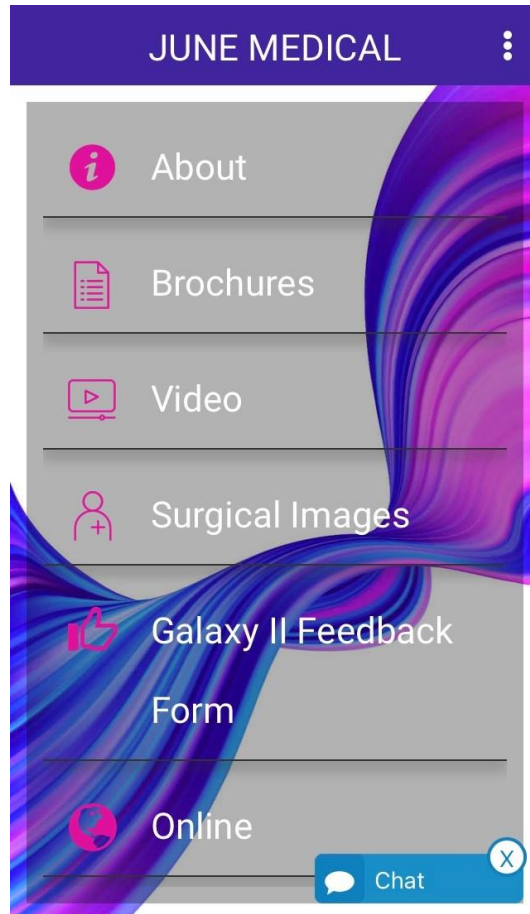


**Product name:** Galaxy II Square Blunt 12mm  
**Product code:** JUNE3001b12  
**Sold as:** Box of 10  
**Content:** 1x Retractor frame  
8x 12mm Blunt Hook  
Catheter Clip  
Galaxy LUXC clip for light attachment

**Product name:** Galaxy II Square Sharp 5mm  
**Product code:** JUNE3001s5  
**Sold as:** Box of 10  
**Content:** 1x Retractor frame  
8x 5mm Sharp Hook  
Catheter Clip  
Galaxy LUXC clip for light attachment



# JUNE Medical App



- iPhone and Android
- Brochures
- Case Studies
- Product Images and Videos
- Surgical Images
- Feedback Forms
- Link to Website

# Not Just Kits!

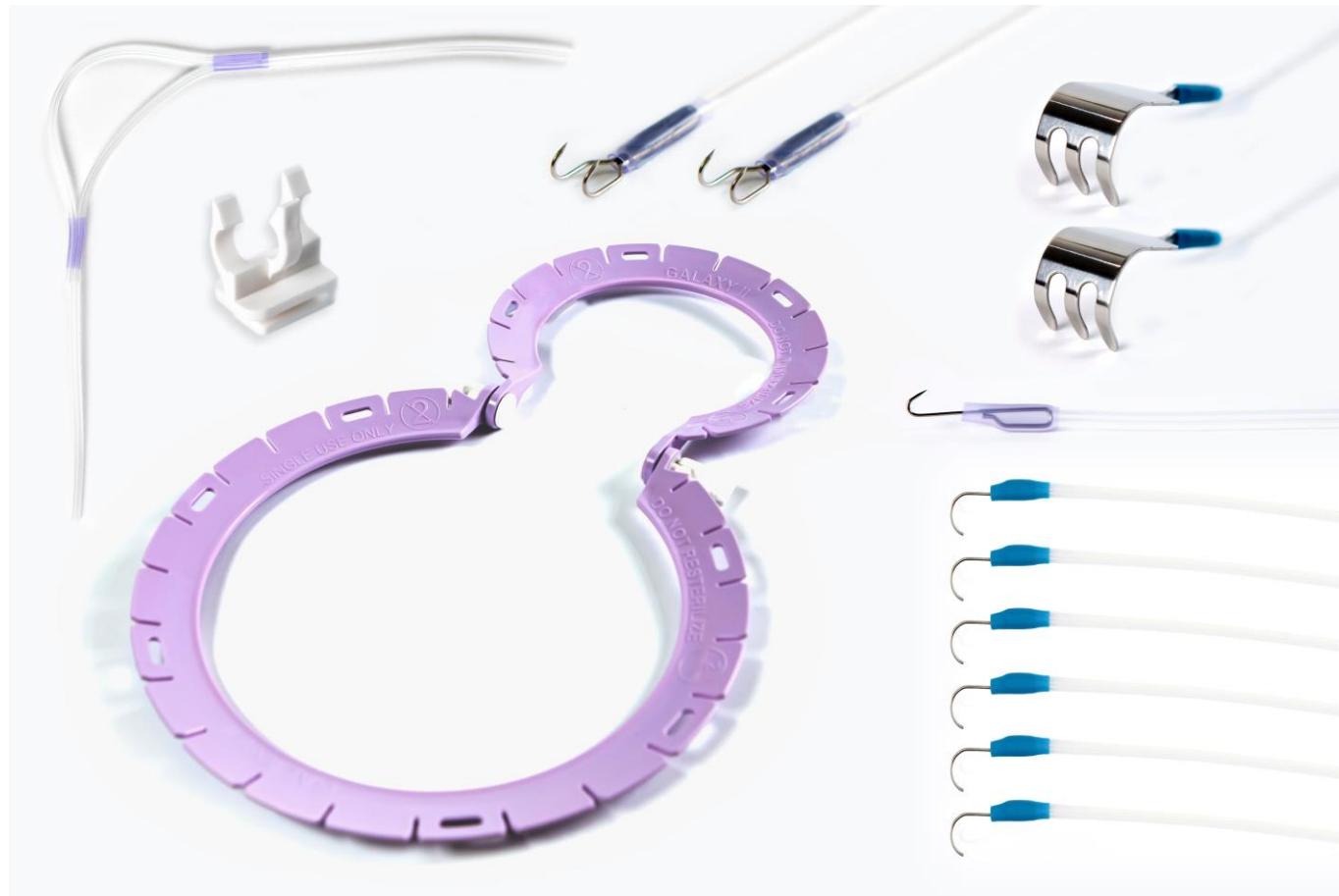
- FRAMES ONLY
- MALE KIT
- INDIVIDUAL STAYS
- GALAXY II LUX CONNECT



# GALAXY II Male Urology Kit

JUNE  
MEDICAL  
SIMPLIFYING COMPLEXITY

GALAXY II



INTERNAL USE ONLY

# Slider

- Our lightest retractor frame yet at only 61g
- Horseshoe/U Shaped
- Adjustable Sliding Mechanism Adjustable
- Width Range 11.3cm and 16cm. Inner Length 13cm
- Fixation slots compatible with our range accessories
- Ease of placement in difficult to access surgical sites e.g. Thyroid Surgery.
- Weighted Speculum/Foley Catheter



# Stays



5mm Sharp

5mm Blunt



5mm Semi Blunt

12mm Blunt

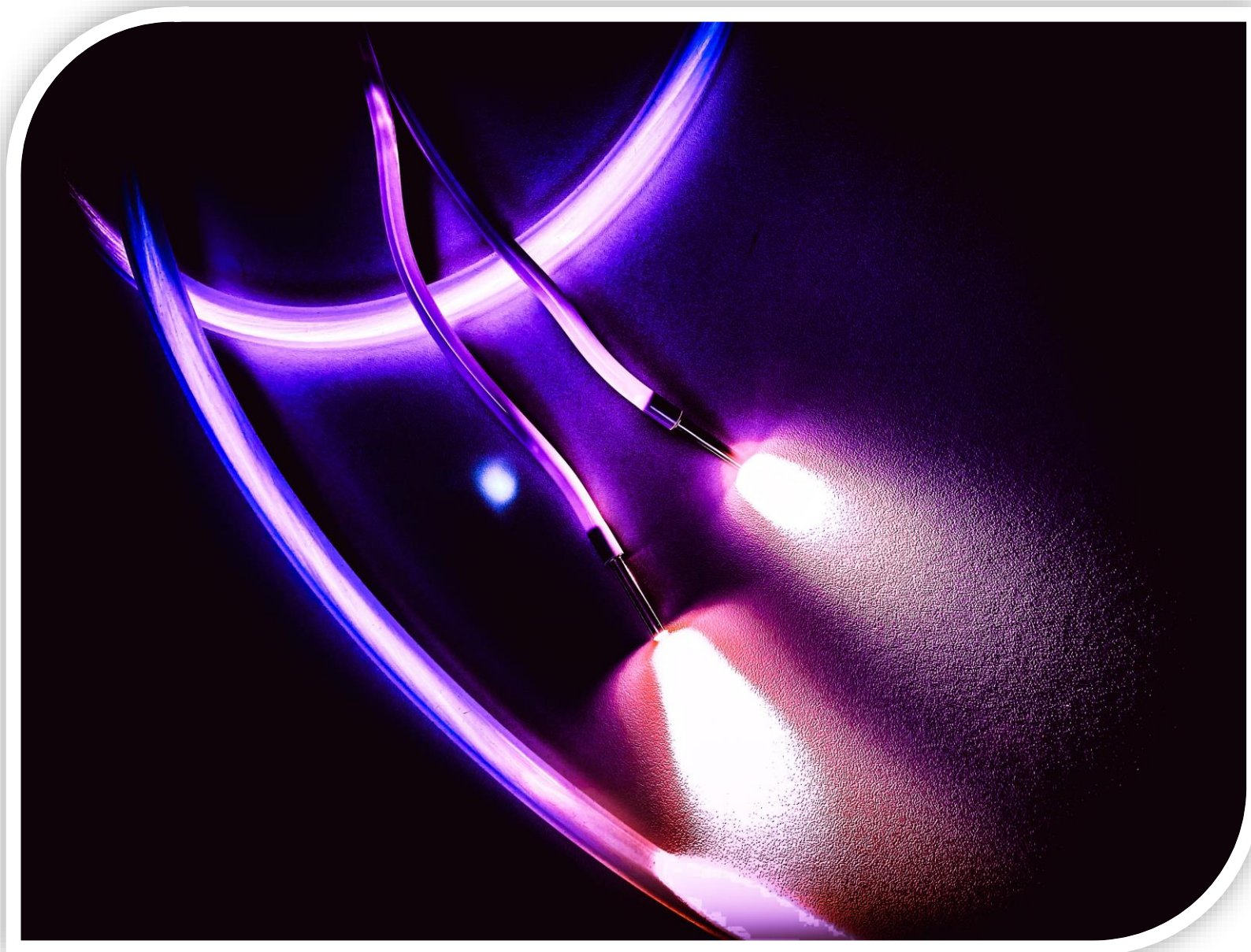


7mm Double Sharp

20mm 3 Finger Claw



# Introducing GALAXY II LUX Connect



INTERNAL USE ONLY

# Lux Connect Key Features

- Specifically designed for minimally invasive surgeries
- Deep cavity visualisation
- Lighted tips stay cool
- Bifurcated design eliminates shadows
- Flexible fibre optics deliver bright yet diffused light - no glare
- Entire illuminator is malleable through 180 degrees
- Connects via ACMI fibre optic cable



# Specifications

- Acrylic, Medical grade PVC, Stainless Steel
- Length of light 55.6cms (+\ -2cms)
- Diameter: Optical Tip 3.4mm Tubing 4.6mm
- Weight: 43g (unit only)
- Sterile, single use
- 2 year shelf life
- Tyvek Sterile Packaging with optical tip covers

# Dos and Don'ts

- Maximum wattage 300w
- Don't bury in tissue. Consider patient photo sensitivity
- Contraindicated to re-use
- Non recyclable
- No hazardous materials
- Suitable for most surgeries excluding cranial or cardiac surgery (no clinical investigation)

# Unique CAM Locks

- Innovative Cam Locks
- Time saving
- Quick, single hand adjustment
- No Detachment





# Competitor Products

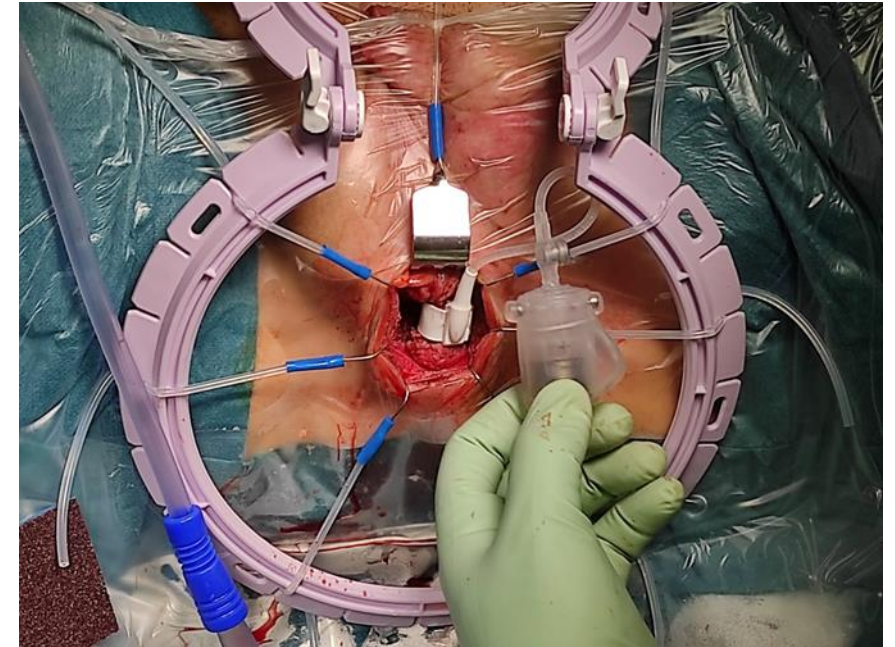
- Cooper Lonestar
- LiNA Seastar
- Applied Medical TLC Wilson Alternative to GalaxyII Male Kit



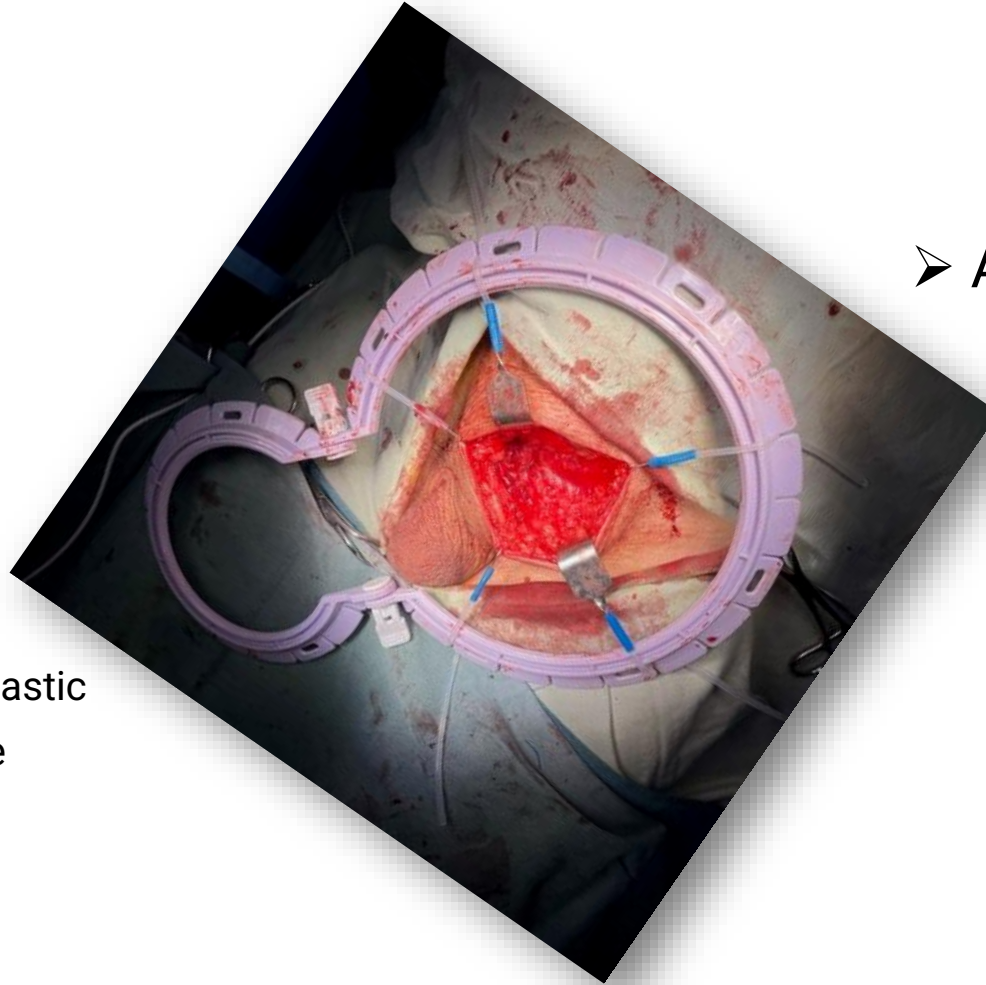
# Benefits: Why Use A Retractor?

## Purpose

- Using a retraction system in surgery:
  - Optimises visualisation of the surgical site
  - Reduces the number of staff required to assist
  - Frees up surgical assistant
  - Less staffing/reduced cost/less risk of infection and microbial contamination/no sterilisation costs
  - No fatigue/back pain from bending for long periods
  - Reduction in plastic - greater stability



# GALAXY II: Benefits



- Unique Cam locking mechanism
- Lightweight
- 10-14 % reduction in plastic
- Single use/ Disposable
- No assistant required
  - .

- Additional light accessories
  - Only ring retractor with a light.
  - Enhanced visual with Galaxy II LUX Connect

# How to use Galaxy II: Preparation

## Non-Sterile Staff

1. Open the packing box.
2. Take out one Galaxy II™ retractor pouch.
3. Remove the outer sleeve and transfer content to the sterile field.

## **In separate pouches:**

**1x Retractor ring**

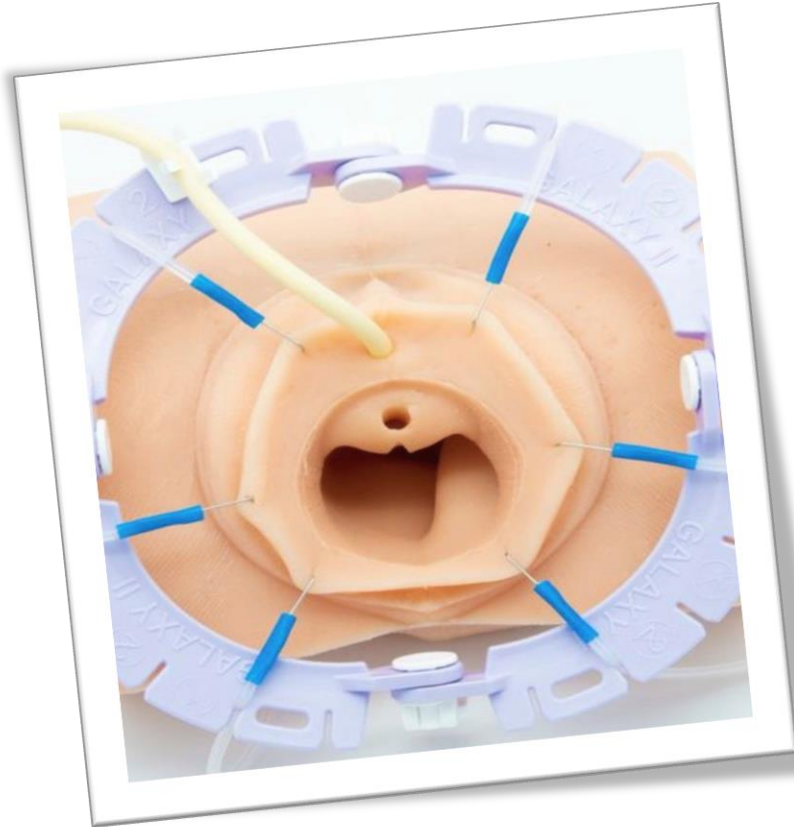
**1x Catheter clip**

**1x light clip**

**8x Stay hooks**



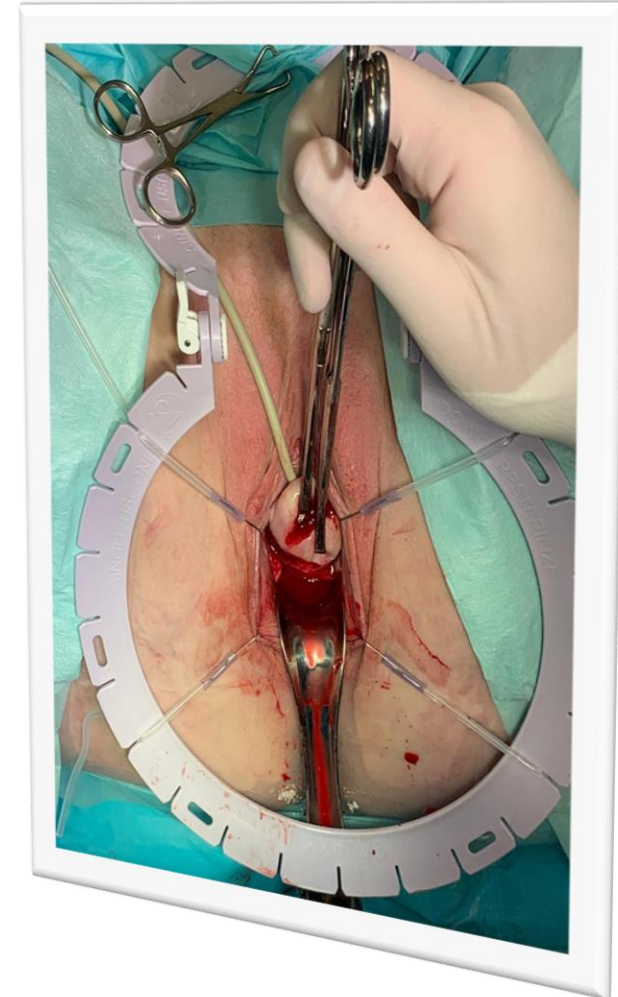
# How To Use GALAXY II: Placing The Retractor



- Position frame as required.
- Close cam locks to secure frame angles.
- Hold down the frame with one hand and begin introducing stays into the system.
- To maintain equilibrium, continue to add stays in opposing directions.

# Gynaecology/Urology Procedures

1. Pelvic floor repair
2. Vaginal hysterectomy
3. Urinary incontinence procedures including slings
4. Anterior and posterior vaginal wall prolapse (A & P repair)
5. Vaginal mesh revision/excision
6. Rectovaginal fistula repair
7. Cystectomy
8. Perineoplasty
9. Episiotomy repair, vaginal biopsies and cysts



# Frequently Asked Questions

- How does the retractor stay in place?
- Which shape do I need?
- Which type of stay do I need?
- Will I need more than 8 stays?
- Can I buy the LUX Connect without the retractor?





Thank you for your time today. Any questions?



# Contact Details

**Sam Ketley**

Head of Medical Education

**JUNE Medical**

**T. +44 7399 973266**

**E. [sam.ketley@junemedical.com](mailto:sam.ketley@junemedical.com)**

Recipient of The Queen's Award for Enterprise: INNOVATION 2021

**USA:** JUNE Medical USA INC, 257 Old Churchmans Rd., New Castle, DE 19720, USA, +1 (302) 408 0084

**UK:** JUNE Medical, 9 York Way, High Wycombe, HP12 3PY, UK , +44 (0) 1628 330010

**EU:** JUNE Medical AB, Sjolockevagen 36, 51163 Skene, Sweden +44 (0) 1628 330010



THE QUEEN'S AWARDS  
FOR ENTERPRISE:  
INNOVATION  
2021



GALAXY II



**Distributed by June Medical Ltd**

**9 York Way, High Wycombe, Buckinghamshire HP12 3PY, United Kingdom [contact@junemedical.com](mailto:contact@junemedical.com)**



**Manufactured by Mosaic Surgical Limited**

**9 York Way, High Wycombe, Buckinghamshire HP12 3PY, United Kingdom [contact@mosaicsurgical.com](mailto:contact@mosaicsurgical.com)**