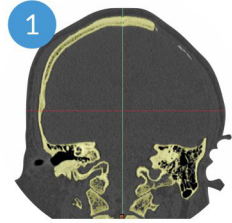
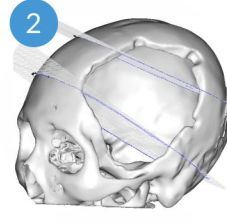


## Order process



CT scan data received



3D reconstruction  
(2 working days)



Design confirmed



Production  
(3 working days)

## Data Requirement

|                        |  |
|------------------------|--|
| <b>Data source</b>     | CT   |
| <b>Data format</b>     | DICOM (other picture formats are not acceptable)         |
| <b>Slice thickness</b> | preferably 0.6mm-1mm (should be < 2mm)                   |
| <b>Scan range</b>      | scan edges should be beyond the defect by at least 10mm. |

## Sterilization instruction

The cranial implant is supplied NON-STERILE and is intended for single use.  
Recommended parameters for sterilization of the NON-STERILE implant:

| Method | Temperature | Time       |
|--------|-------------|------------|
| Steam  | (121±1) °C  | 30 minutes |



# Recranio™

Customized Cranio-Maxillofacial Repair System



- PEEK material
- 3D reconstruction and design
- Minimal metal artifact



**Medprin Biotech GmbH**  
Address: Gutleutstraße 163-167, 60327 Frankfurt am Main, Germany  
Tel: +49-69-580059970 Fax: +49-69-580059971  
Email: Sales@medprin.com

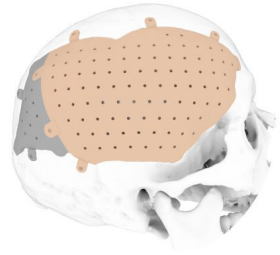
**Medprin Biotech L.L.C.**  
Address: 14241 East Firestone Blvd, Suite 400, La Mirada, CA90638, USA  
Tel: +1-562-2392150 Fax: +1-562-7249828  
Email: Sales@medprin.com

[www.medprin.com](http://www.medprin.com)

© 2016 MEDPRIN BR201RS01EN V1.0/001



**IMEDCARE**  
Innovative Medicare Technology PTY LTD  
[imedcare.com.au](http://imedcare.com.au)



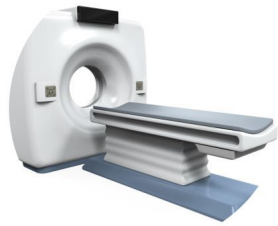
### Perfect matching

3D design and reconstruction based on patient's CT scan data



### Deform resistance

Recranio™ can withstand compression pressure up to 530 PSI



### CT MRI compatible

Minimal artifact

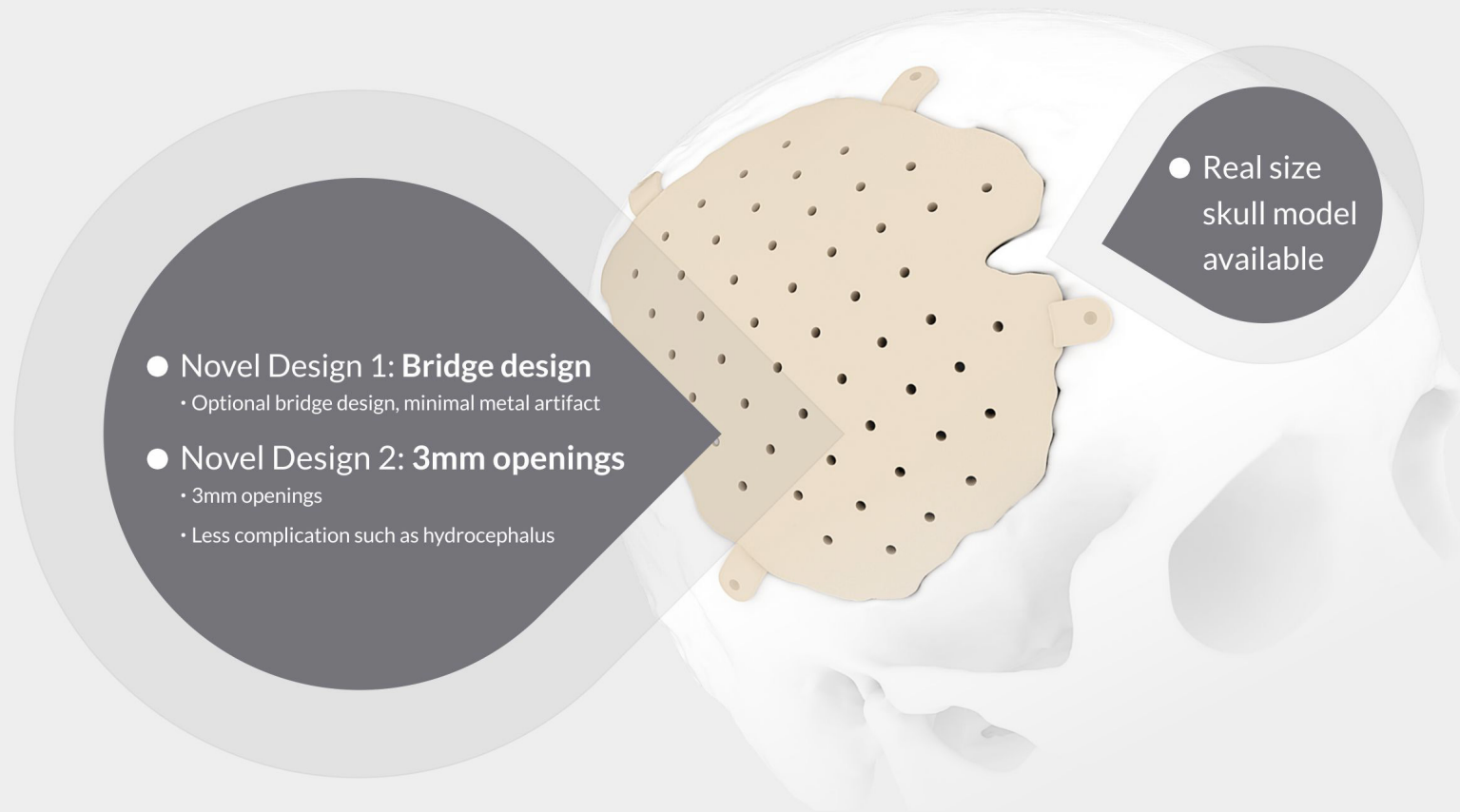


### Heat resistance

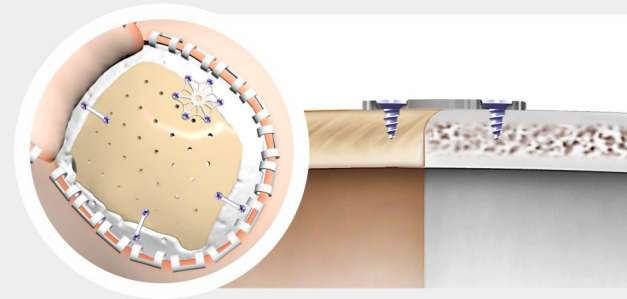
Low heat conductivity



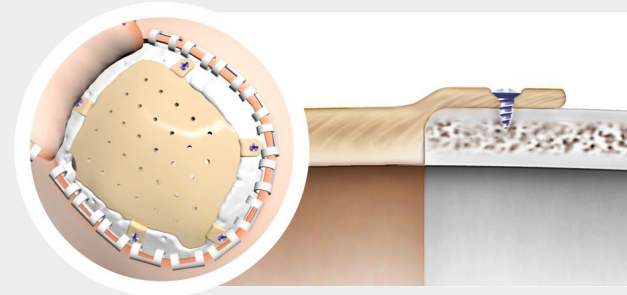
### Similar elastic modulus with native bone



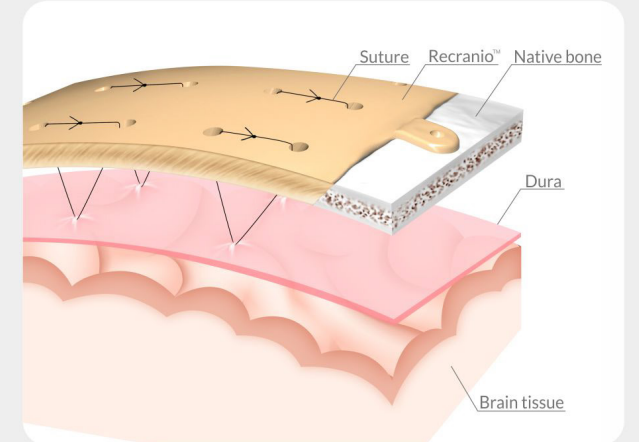
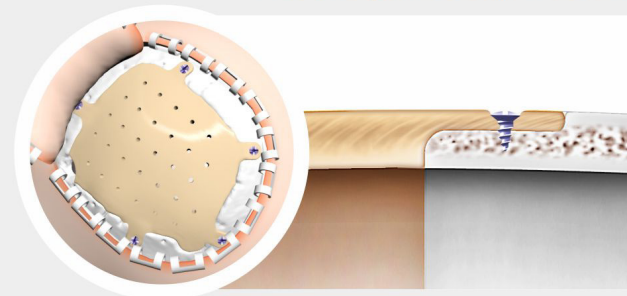
### No bridge, fixed by Ti plates and screws



### Raised bridge, fixed by Ti screws



### Flat bridge, fixed by Ti screws



### Dura suspension recommended

Recranio™ with openings enables dura suspension during surgery, which could reduce the incidence of subcutaneous hydrops and hemocele.

## PEEK Polyether ether ketone

Recranio™ is a crano-maxillofacial repair system intended for replacement of cranial and craniofacial defects. The implant is shaped and sized to perfectly fit the anatomy of individual patients.

